

# Startup-Tec Story at Grand Wailea, Maui

December 2008

**Maui 12/08** - This past December, 2008 the Grand Wailea Hotel in Maui, Hawaii resurfaced their swimming pools, lagoons and water features using a quartz aggregate called QuartzScape. This job entailed resurfacing a total combined area of over 650,000 gallons of water.

Once the aggregate is applied and the pool is filled, the normal procedure is to expose the finish and remove the plaster dust accumulation by circulating upwards of three gallons of acid (per ten thousand gallons of pool water) during a period of three to five days. Then scale-stain inhibitors are added weekly (one quart per 10,000 gallons) for about a month to help protect the finish.

This old process is laborious, time consuming, hazardous and expensive. However, this time National Pool Tile selected a new product called Startup-Tec to expose the aggregate finish. Unlike the old process, Startup-Tec is added as soon as you begin filling the pool and its special polymers expose the aggregates without the costly hot startup process. In addition, the product provides about six months of scale and stain protection as opposed to old sequestrants that require weekly follow-up treatments.

As a result of using Startup-Tec, the aggregate was exposed without clouding the water and without having to do a time consuming hot startup up process.

**Testimony** – *“I just wanted to reiterate my experience with Start Up-Tec in the Grand Wailea Resort pools and water park on Maui, Hawaii. After refinishing the pools with QuartzScapes and StoneScapes materials, we included Start Up-Tec in the fill water. The pictures show how we placed the open bottles in the pool bottom while the pools were filling. I was happy to find that after the pools were filled, there was no scale (plaster dust) whatsoever in the pools. This is important because untreated scale can damage the pool surface. When companies and homeowners pay significant amounts of money for a beautiful pool surface, the last thing they need is disappointment because the pool is covered in plaster dust.*

*Thanks for a great product. As a pool finish sales rep for National Pool Tile in Southern California, I will be recommending Start Up-Tec for all pool finish applications.”*

Mike Scrivens, National Pool Tile.

**Initial pool  
remodeling**



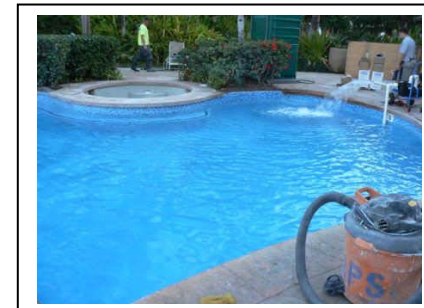
**QuartzScape  
surface  
finish view**



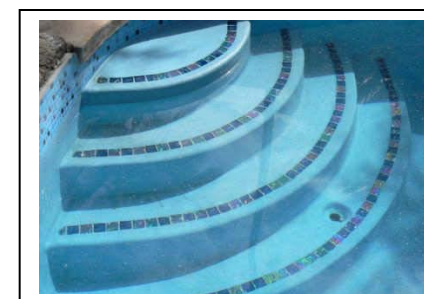
**Filling the pool  
and adding  
Startup-Tec  
Startup  
Treatment**



**Pool filled  
and no  
surface  
brushing  
required**



**No cloudy,  
milky water,  
just  
crystal clear**



**No plaster  
Dust and no  
need to  
perform acid  
“hot startup”  
process**

